



PAN Taiwan Enterprise Co., Ltd.



16F-1, No.16, Jian Ba Road, Chung Ho District,
New Taipei City, Taiwan

TEL : 886-2-8226-5199

FAX : 886-2-8226-5196

EU Declaration of Conformity

The manufacturer **PAN TAIWAN ENTERPRISE CO., LTD. 16F-1, NO. 16, JIAN BA ROAD, CHUNG HO District, New TAIPEI CITY, TAIWAN 235603** declares that the PPE described hereafter

PERSONAL EYE PROTECTOR- SPECTACLE SE2105

is in conformity with the provisions of Regulation (EU) **2016/425** and, where such is the case, with the national standard transposing harmonized standard **No. EN166:2001, EN172:2001 (for the PPE referred to in Article 8)** is identical to the PPE which is the subject of **EC Certificate of conformity No AC 04020 Rev.3** issued on May 24, 2023 by **CERTOTTICA Scarl. - Zona Industriale Villanova, I-32013 Longarone BL, Italy, notify body no.0530.**

Done at : New Taipei City, Taiwan

on May 24, 2023

PAN TAIWAN ENTERPRISE CO., LTD.


Authorized Signature

Vicky Huang
Manager

PAN TAIWAN ENTERPRISE CO., LTD.



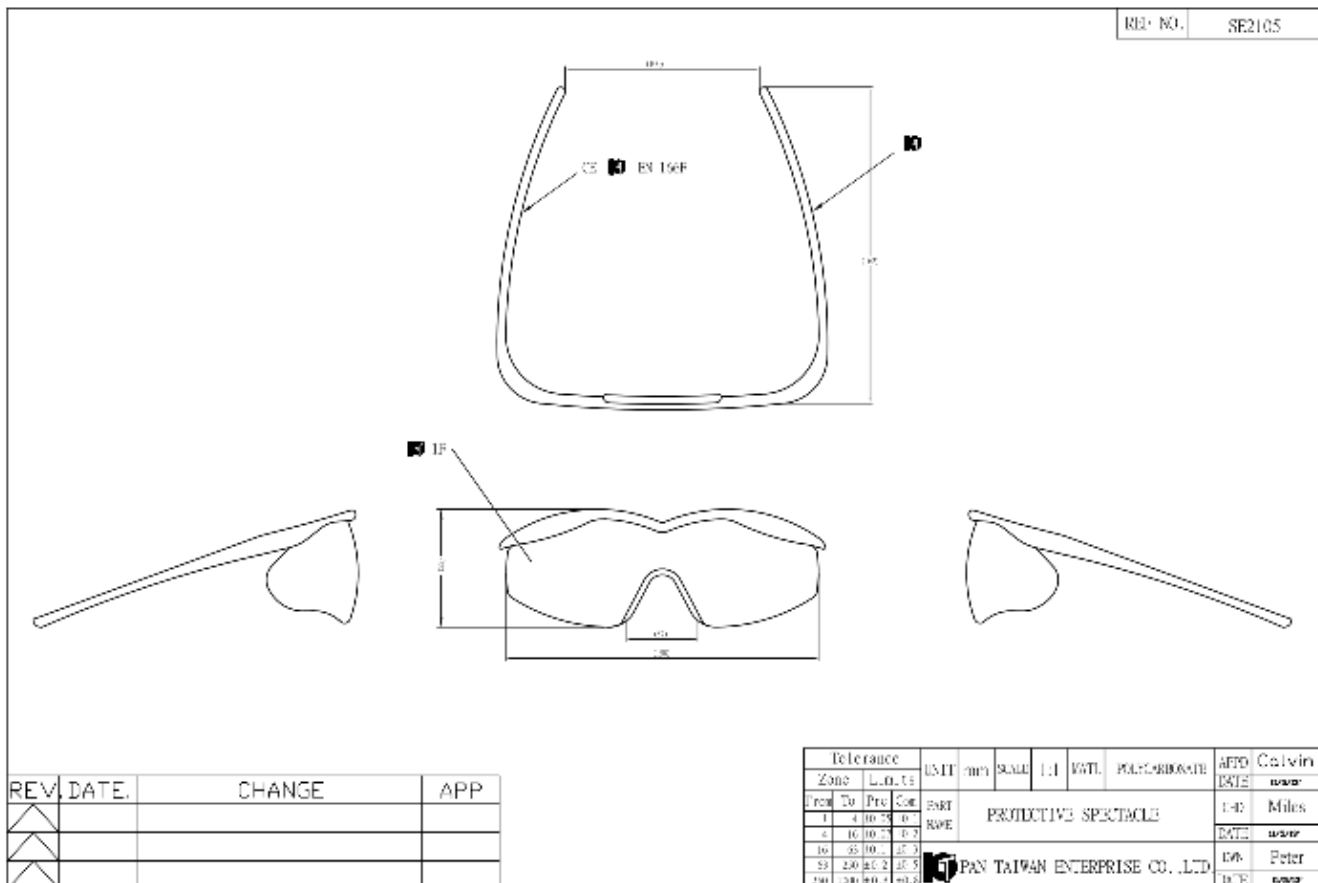
Clear lens



Amber lens



Gray lens



Lens: Polycarbonate

Type: PANLITE L- K- C-1250ZH/ LG1302

Supplied by: Teijin Chemicals Ltd.

Frame and temples: Polycarbonate

Type: PANLITE L- K- C-1250ZH/ LG1302

Supplied by: Teijin Chemicals Ltd.

Temple tips: TPR

Type: M-655A

Supplied by: HONG HUA Plastics Industrial Inc.