



# PAN Taiwan Enterprise Co., Ltd.



16F-1, No.16, Jian Ba Road, Chung Ho District,  
New Taipei City, Taiwan

TEL : 886-2-8226-5199

FAX : 886-2-8226-5196

## EU Declaration of Conformity

The manufacturer **PAN TAIWAN ENTERPRISE CO., LTD. 16F-1, NO. 16, JIAN BA ROAD, CHUNG HO DISTRICT, NEW TAIPEI CITY 235603, TAIWAN** declares that the PPE described hereafter

### **SE2160 Personal eye Protector- Spectacle**

is in conformity with the provisions of Regulation (EU) **2016/425** and, where such is the case, with the national standard transposing harmonized standard **No. EN166:2001, EN170, EN172 (for the PPE referred to in Article 8)** is identical to the PPE which is the subject of **EC Certificate of conformity No AC 04021 Rev.5** issued on **May 31, 2023** by **CERTOTTICA Scarl. - Zona Industriale Villanova, I-32013 Longarone BL, Italy, notify body no.0530.**

Done at : **New Taipei City, Taiwan**

on **May 31, 2023**

PAN TAIWAN ENTERPRISE CO., LTD.

  
Authorized Signature

Vicky Huang  
Manager

PAN TAIWAN ENTERPRISE CO., LTD.



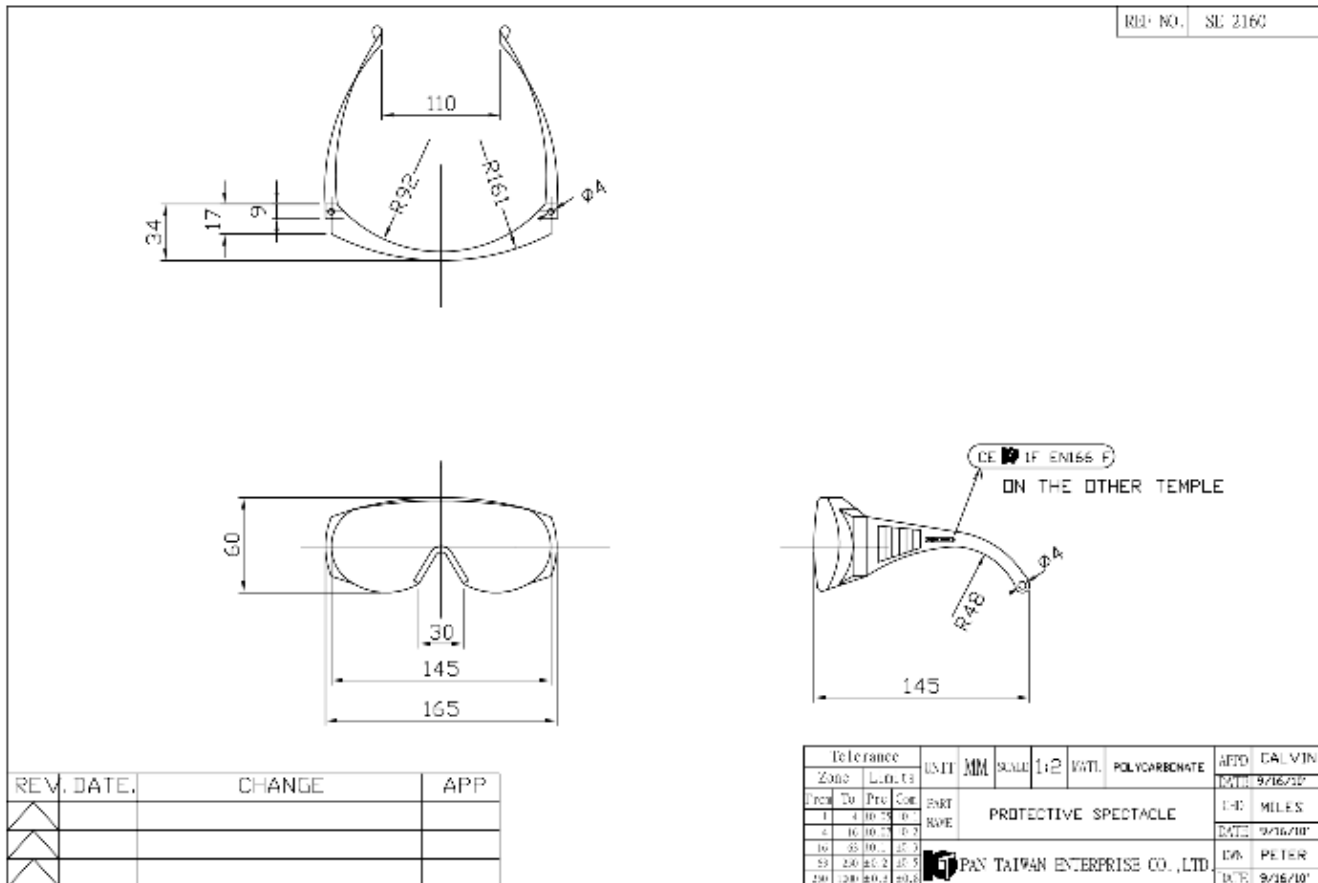
Clear lens



Gray lens



Amber lens



Frame: Nylon

Type:

Supplied by:

Lens: Polycarbonate

Type: PANLTIE ® L-,K-,C- 1250ZH/ LG1302

Supplied by: Teijin Chemicals Ltd.

Temple:

Type: PANLTIE ® L-,K-,C- 1250ZH/ LG1302

Supplied by: Teijin Chemicals Ltd.