



PAN Taiwan Enterprise Co., Ltd.



16F-1, No.16, Jian Ba Road, Chung Ho District,
New Taipei City, Taiwan

TEL : 886-2-8226-5199

FAX : 886-2-8226-5196

EU Declaration of Conformity

The manufacturer **PAN TAIWAN ENTERPRISE CO., LTD. 16F-1, NO. 16, JIAN BA ROAD, CHUNG HO DISTRICT, NEW TAIPEI CITY, TAIWAN 235603** declares that the PPE described hereafter

SE2178 Protective Spectacle

is in conformity with the provisions of Regulation (EU) **2016/425** and, where such is the case, with the national standard transposing harmonized standard **No. EN166: 2001, EN165: 2005, EN167: 2001, EN168: 2001**(for the PPE referred to in Article 8) is identical to the PPE which is the subject of **EC Certificate of conformity No AC 04023 Rev.3** issued on May 24, 2023 by **CERTOTTICA Scarl. - Zona Industriale Villanova, I-32013 Longarone BL, Italy, notify body no.0530.**

Done at : New Taipei City, Taiwan

on May 24, 2023

PAN TAIWAN ENTERPRISE CO., LTD.

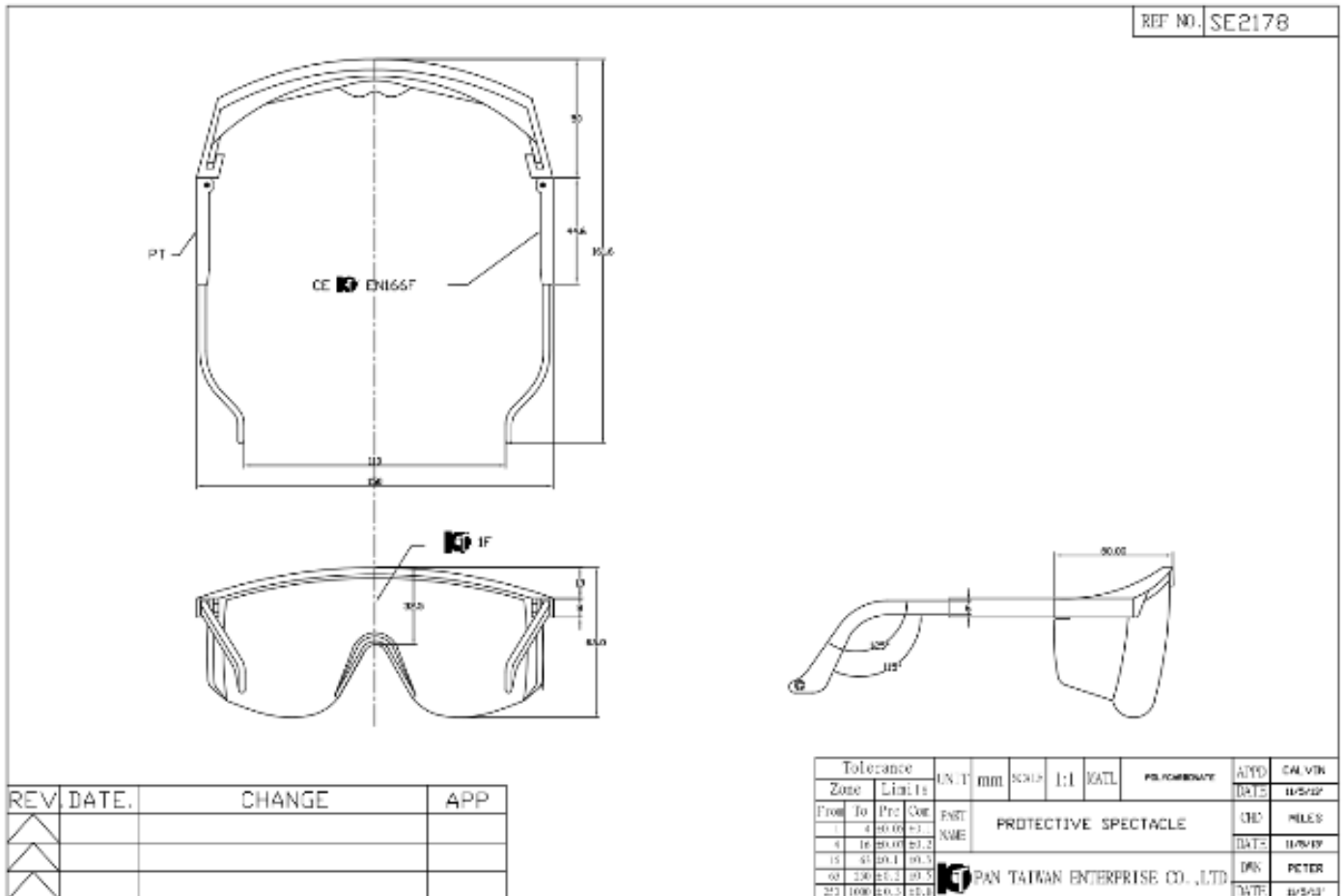


Authorized Signature

Vicky Huang
Manager
PAN TAIWAN ENTERPRISE CO., LTD.



Clear lens



Frame: Nylon
 Type: PA66
 Supplied by: INVISTA B.V.

Lens: Polycarbonate
 Type: PANLITE ® L-, K-, C- 1250ZH/ LG1302
 Supplied by: Teijin Chemicals Ltd.

Temple: Nylon
 Type: PA66
 Supplied by: INVISTA B.V.