



PAN TAIWAN ENTERPRISE CO., LTD

16F-1, NO. 16, JIAN BA ROAD, TEL:886-2-8226-5199

CHUNG HO DISTRICT, NEW TAIPEI CITY, TAIWAN FAX:886-2-8226-5196

E-Mail:safety@pantaiwan.com.tw safety@pantaiwan.com.tw



EU Declaration of Conformity

The manufacturer **PAN TAIWAN ENTERPRISE CO., LTD. 16F-1, NO. 16, JIAN BA ROAD, CHUNG HO DISTRICT, NEW TAIPEI CITY, TAIWAN 23511** declares that the PPE described hereafter

SE2186 Protective Spectacle

is in conformity with the provisions of Regulation (EU) **2016/425** and, where such is the case, with the national standard transposing harmonized standard **No. EN166: 2001, EN165: 2005, SE167: 2001, SE168: 2001 (for the PPE referred to in Article 8)** is identical to the PPE which is the subject of **EU Certificate of conformity No AC 04024 Rev.2** issued in May 25th, 2018 by **CERTOTTICA Scarl. - Zona Industriale Villanova, I-32013 Longarone BL, Italy, notify body no.0530.**

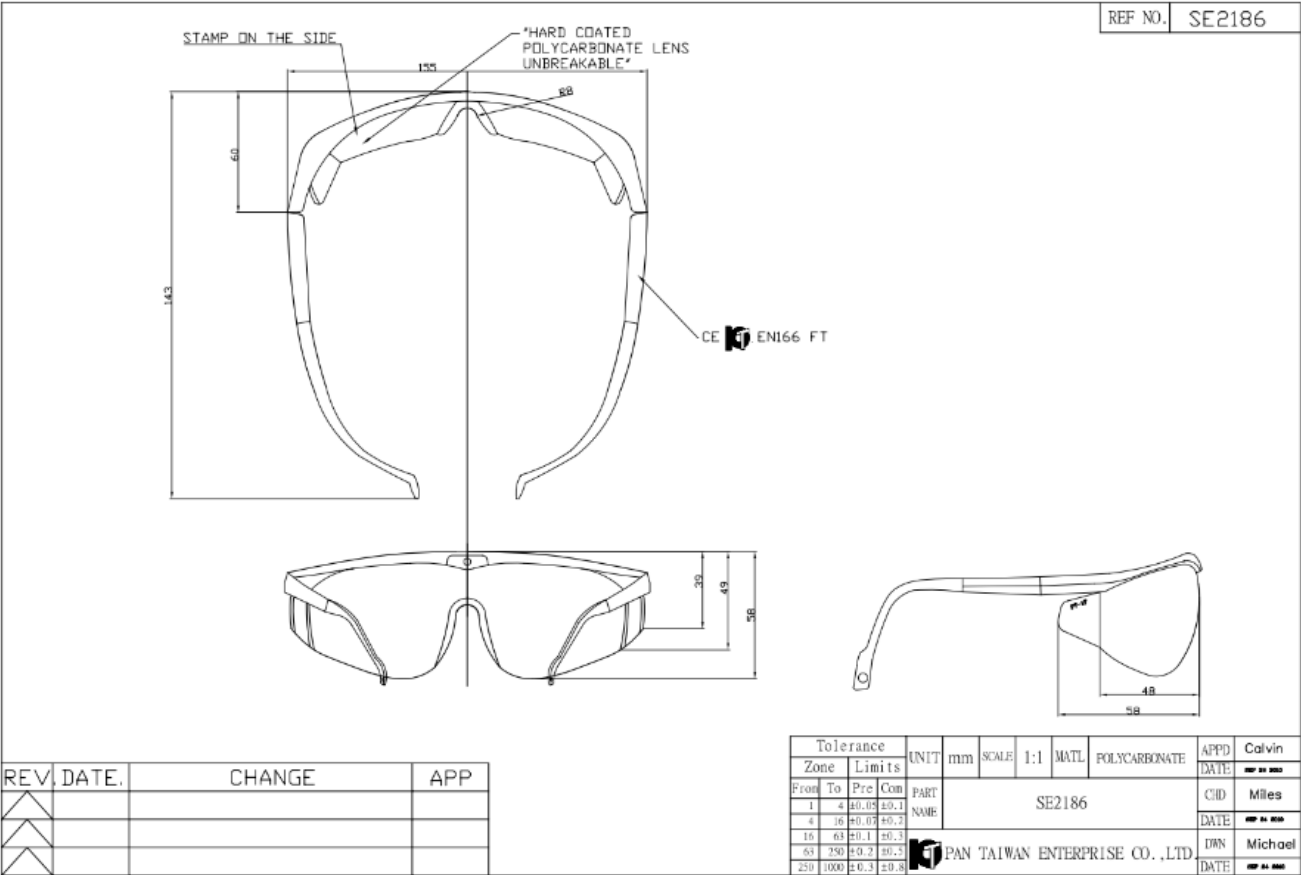
Done at : **New Taipei City, Taiwan**

on **May 30, 2018**

Ted Lin
Vice General Manager
PAN TAIWAN ENTERPRISE CO., LTD.



Clear lens



Frame: Nylon

Type: 21SPC

Supplied by: HONG HUA Plastics Industrial Inc.

Lens: Polycarbonate

Type: PANLITE ® L-, K-, C- 1250ZH/ LG1302

Supplied by: Teijin Chemicals Ltd.

Temple: Nylon

Type: 21SPC

Supplied by: HONG HUA Plastics Industrial Inc